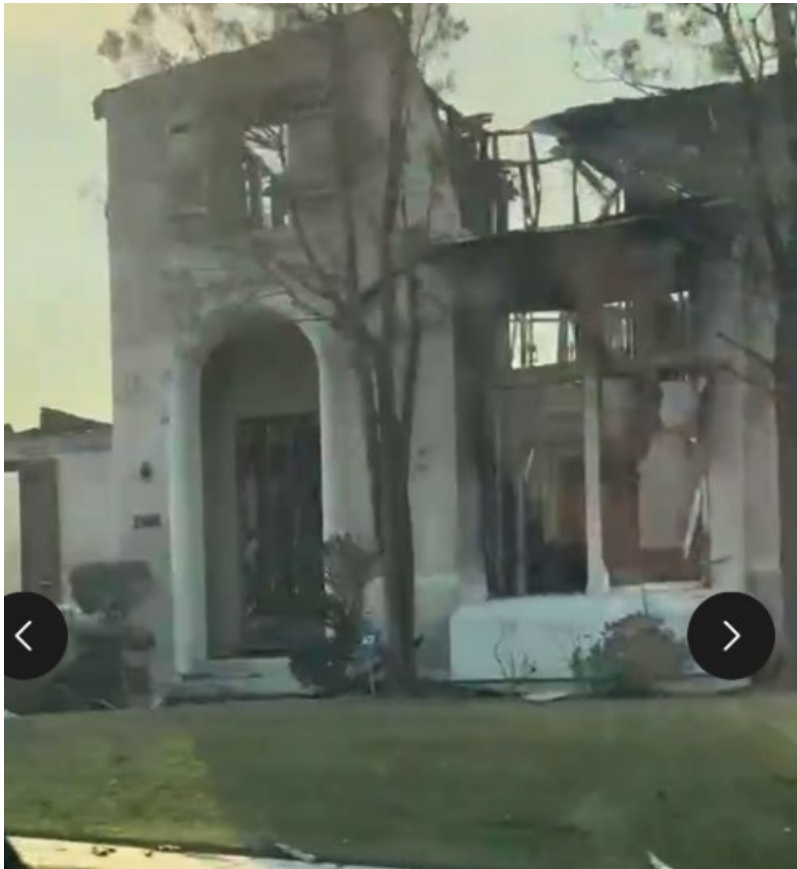


We are so grateful for the thoughtful support from the entire AESC family. I always knew our bond with each was very deep but never expected the outpouring of support and love that I have experienced. We really feel so fortunate to be part of this amazing family.

Losing our house was devastating, but for Serena it was the last manifestation of her late mom that made it especially difficult. Her mom decorated the house, and you could feel her presence everywhere. With all the ups and downs that followed, the house was always her safe harbor. You can replace a house but not the sense of home.



Knowing that we have a larger family embracing us means so much during this time of loss. Thank you for being there for us.

Thomas Lee, MD

Associates Chair in Ophthalmology

Children's Hospital Los Angeles

Associate Professor of Clinical Ophthalmology

Keck School of Medicine of USC